

Adding custom "Points Of Interest" (POI) on a Kenwood Navigation System

Kenwood navigation systems provide the opportunity to use so-called Points Of Interest. all you need is a (micro) SD card, CD-ROM or USB stick to upload the POI's . (A table can be found which of these media you should use.) After uploading these items are included in the list of Custom POI's, so the user can easily find and navigate to the nearest point. (For example, the nearest McDonald's, DIY and Albert Heijn.) This option is often used to add speed camera locations. This will, if you are approaching a speed camera, provide a tone signal and also shows a bar with the message "Warning ... Speed km / h" (... Is the maximum speed on the spot.)



Several websites (eg www.poiedit.com) can provide these specific location information. These lists are updated regularly by each website. These lists are formatted in a special format, so they can be directly imported into the navigation system

The following procedure describes, very simply, how the updates of useful items from various Web sites can be automatically downloaded and installed on your Kenwood Navigation System.

Required Hardware & Software:

- Kenwood Navigation System
- PC
- Windows XP / Vista / Windows 7
- Memory card reader (internal or external) or CD-Writer
- Internet.
- (Micro) SD card, CD-ROM or USB stick

Software:

- PoiEdit *
- Garmin POI Loader *

STEP 1: Downloaden and install the software

PoiEdit

- Go to www.poiedit.com and click the "DOWNLOAD" button in the left menu.



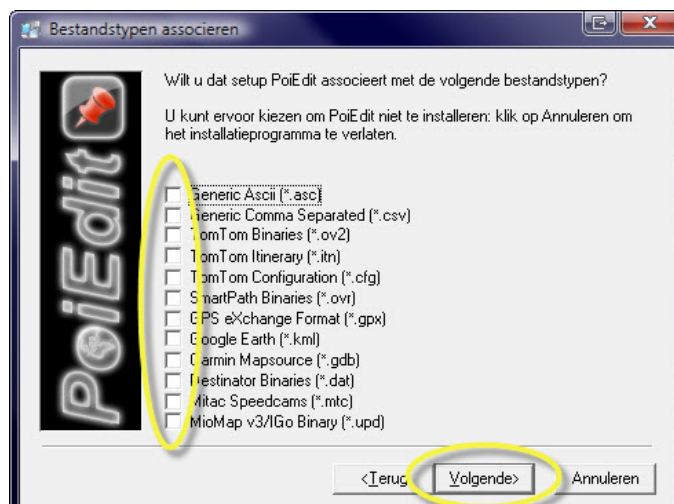
- Select the desired language..

Current version	
Description	Size
Download PoiEdit 2007.2 English	2.12 MB
Download PoiEdit 2007.2 Dutch	2.43 MB
Download PoiEdit 2007.2 Spanish	2.43 MB
Download PoiEdit 2007.2 French	2.43 MB
Download PoiEdit 2007.2 Italian	2.43 MB
Download PoiEdit 2007.2 Portuguese	2.43 MB
Download PocketPoiEdit v1.0	248 KB

- Follow the download instructions on the screen (just click on the banner at the top to activate the download.)
- When the download is complete, double click on the icon to start the installation, and then walk through the steps below.



- After these steps are asked which file types should be associated with PoiEdit. We advise you to uncheck everything.

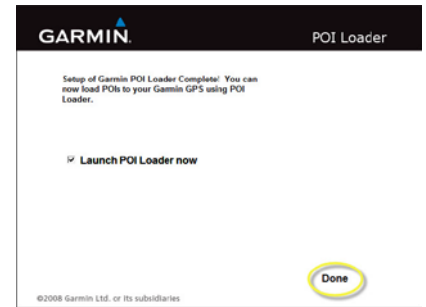
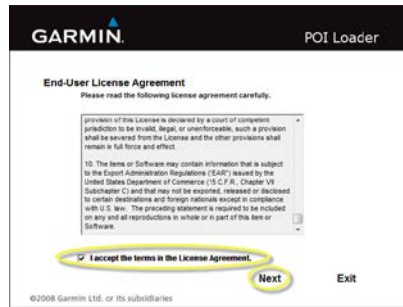
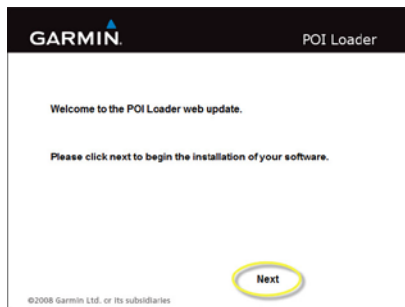


- Complete the rest of the installation.



Garmin POI Loader

- Go to www.garmin.com, and download POILoader <http://www8.garmin.com/products/poiloader/>
- Once the download is complete, double click on the icon again. Installation is complete automatically. You cannot adjust settings.



Both programs are now installed and ready for use.



STEP 2: <PoiEdit Set>

The program allows you to edit the POI's from various websites and automatically update the POI files. Especially for the speed camera this is interesting because quite often they are moved around. However, these files can be downloaded from various websites, you often need to register first. This should be done only once and in most cases free.

Once you're signed up, please enter your username and password in PoiEdit.

The (English) site www.poihandler.com has a very large database with many different POI groups across Europe. eg lists of several museums, supermarkets, stores, hotel chains, car dealers and service stations, which are all neatly arranged by brand and logo in these lists are the icons of various brands included it.

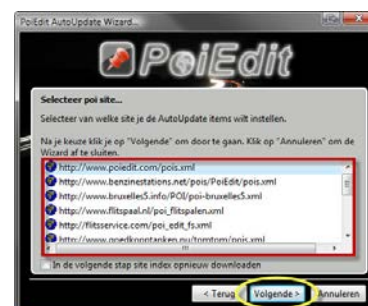
- Start and select PoiEdit
"Start AutoUpdate Wizard".



- Read the info. window and click "Next"



- Select the desired POI provider and Click "Next".



- Enter your username and password you received from the POI provider. Click "Next".



- Change the setting for the country. Click "Next".

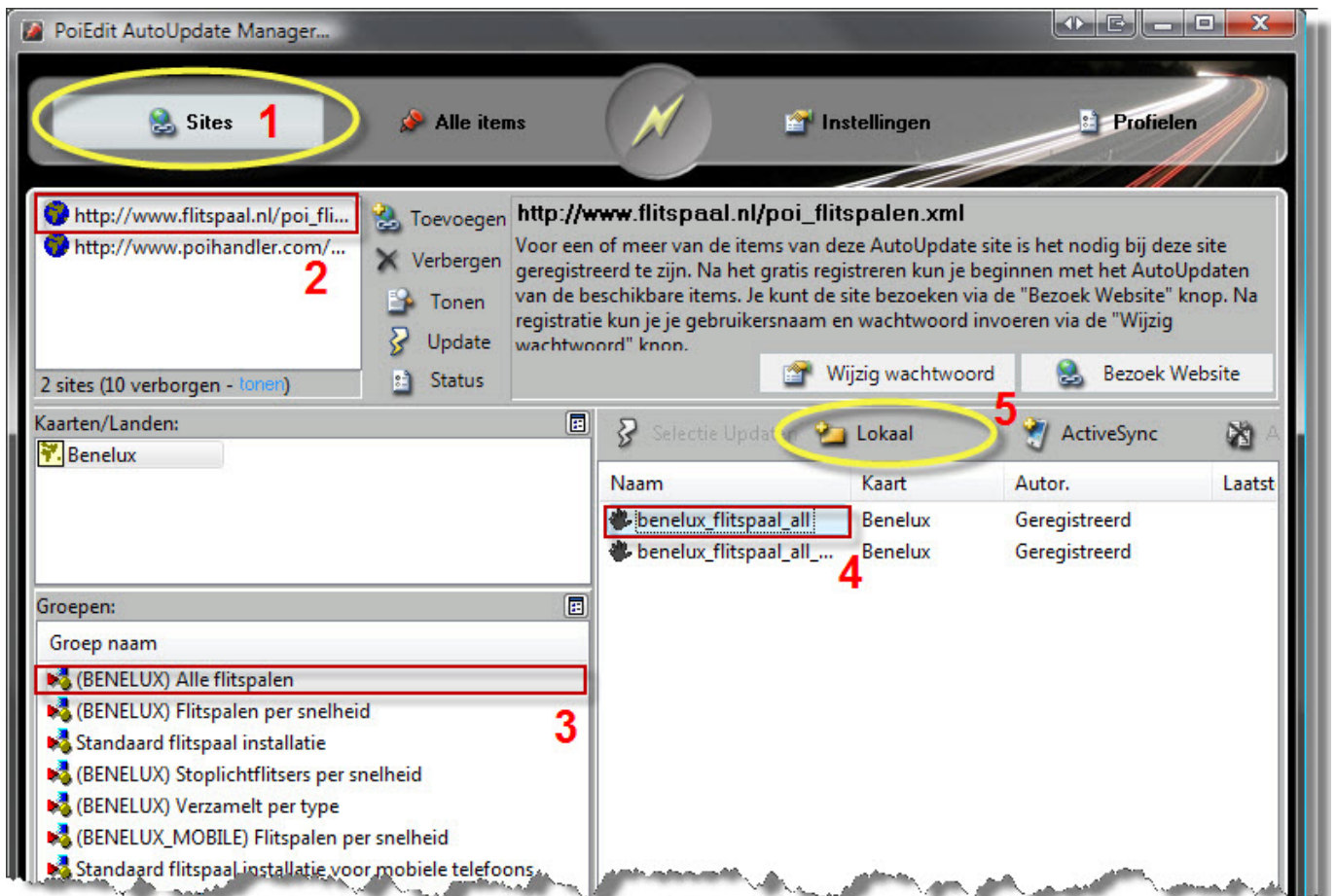


- Select: "Folder on My Computer".
 - > Select a target "folder" where you want to save files.
 - > Select the Target Format "Garmin Comma Separated.csv".
- Click "Next".



- Read the info. window and click "Next".

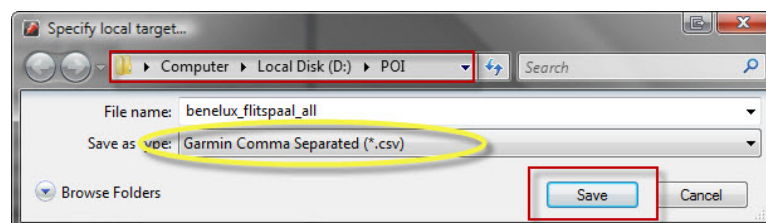




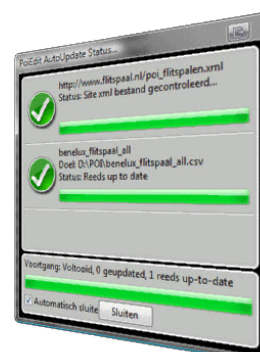
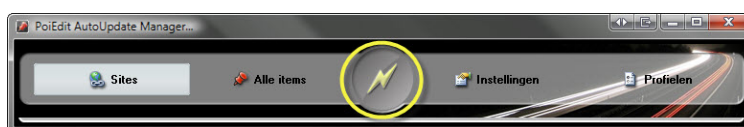
Select the following:

- > The provider POI Step 1 and 2.
 - > The desired POI group Step 3.
 - > The desired POI file Step 4.
- And the location
- > 'local' Step 5.

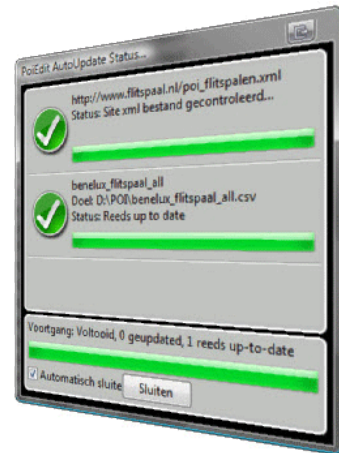
- Select the location where to save files and change "save as type" to "Garmin Comma Separated (. Cvs)".



- Now click the middle button in the top bar. The download starts automatically.



- Just click "Now AutoUpdate"
If you want to update your files.



- Open the "POI Loader" from Garmin.
Read the info. window and click "Next".



- Select "Custom Folder (Advanced)"
click "Next".



- Select the folder where the files are stored
click "Next".



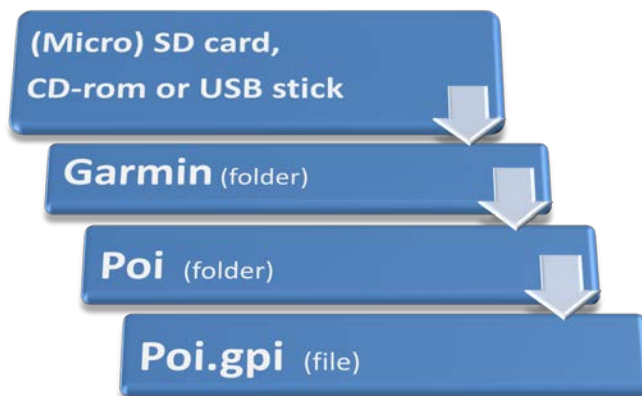
- Check if the details are correct.
Then click "Next".

Then click "Finish".



- Copy the "Poi.gpi" file to a (micro) SD card, CD-ROM or USB drive depending on your system. In the folder "Garmin" -> "Poi" -> "Poi.gpi" file

Which medium you need can be found in the table listed on the last page.
Please use the following structure on the medium:



- Switch your system to navigation and place the (micro) SD card, CD-ROM or USB stick into the Kenwood system in order to use your POI's. The system will now recognize that an update is available and will ask for conformation. Please confirm, the file will be uploaded to the internal memory of your system.

*** The laws pertaining to the use of speed camera data are not standardized throughout Europe. Please check if the use of such data is legal in the country in which you are driving. In Germany, for example, the use of such data whilst driving is an offence. Use of POI's at your own risk. Kenwood is not liable for any defects or problems arising from its use.**

	Model:	Micro SD	SD	CD	USB
Navigatie computer	KNA-G420		X		
	KNA-G421		X		
	KNA-G421V		X		
	KNA-G520		X		
	KNA-G620T		X		
Multimedia systemen	DNX4210xx				X
	DNX4230xx				X
	DNX4250xx				X
	DNX4280xx				X
	DNX520xxx	X			
	DNX521xxx				X
	DNX525xxx				X
	DNX5210xx				X
	DNX5220xx			X	
	DNX5230xx				X
	DNX5240xx			X	
	DNX5250XX				X
	DNX5260xx	X			
	DNX5280xx				X
	DNX7200		X		
	DNX7210xx				X
	DNX7220		X		
	DNX7230xx				X
	DNX7240xx			X	
	DNX7250xx				X
	DNX7260xx		X		
	DNX7280xx				X
	DNX8220xx		X		
	DNX9210xx				X
	DNX9240xx		X		
	DNX9260xx		X		
	DNX9280xx		X		
	DNN6250xx				X
	DNN9230xxx				X
	DNN9250xxx				X